



42 Holme Drive, Scunthorpe, DN15 9DA

£230,000

A two bed detached bungalow in the popular village of Burton upon Stather, on a great corner plot that is no chain and vacant possession.

As you enter the property you have a hallway, kitchen, lounge diner, two double bedrooms and a modern shower room, perfect for someone looking to downsize.

Outside you have a wrap around garden, with turf and patio areas, detached garage and off road parking for a couple of vehicles. Available to view now please call the office to book your appointment.

Entrance

Lounge 16'10" x 12'0" (5.15m x 3.66m)



Outside



Kitchen 13'2" x 7'10" (4.02m x 2.39m)



Bedroom one 15'8" x 10'7" (4.78m x 3.23m)



Bedroom two 9'2" x 8'4" (2.81m x 2.55m)

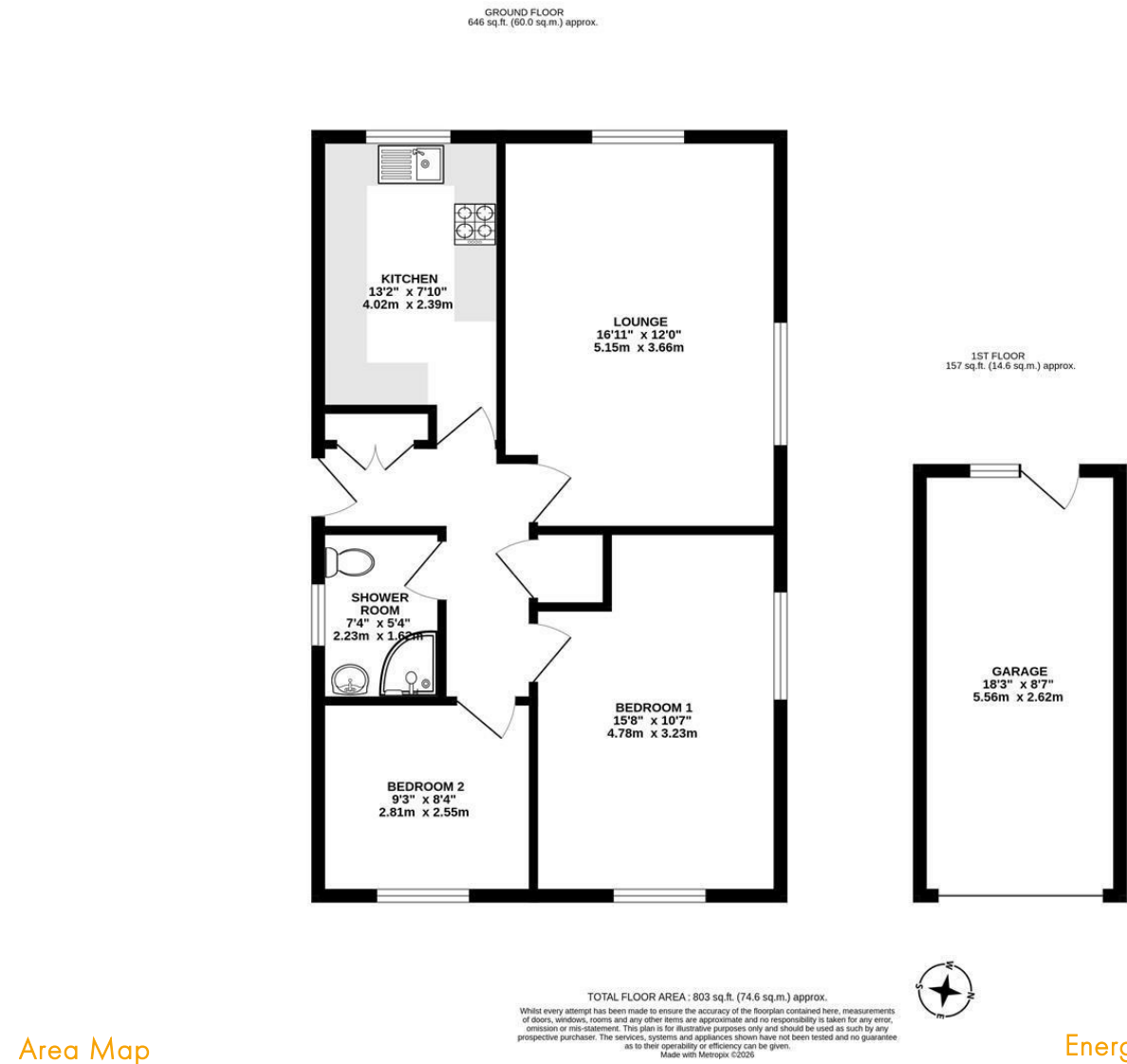


Shower room 7'3" x 5'3" (2.23m x 1.62m)



Garage 18'2" x 8'7" (5.56m x 2.62m)

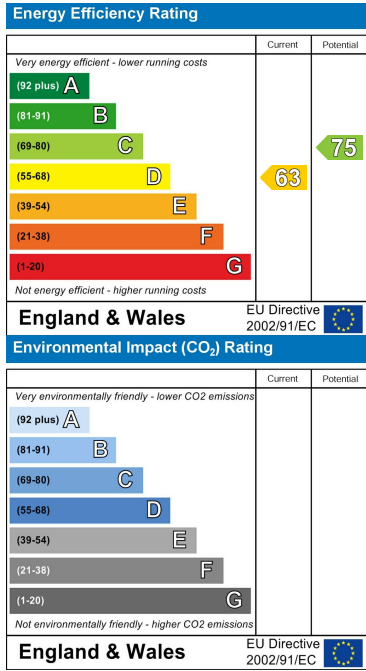
Floor Plan



Area Map



Energy Efficiency Graph



These particulars, whilst believed to be accurate are set out as a general outline only for guidance and do not constitute any part of an offer or contract. Intending purchasers should not rely on them as statements of representation of fact, but must satisfy themselves by inspection or otherwise as to their accuracy. No person in this firms employment has the authority to make or give any representation or warranty in respect of the property.